

Introducing

# DOGGER BANK D WIND FARM

## Dogger Bank D - Tell us what matters to you

**Dogger Bank D is a proposed new fourth phase of the Dogger Bank Wind Farm, the world's largest offshore wind farm.**

Our consultation starts on **Tuesday 10 September** and closes at **midnight on 22 October 2024**.

### Your chance to take part

You can share feedback by:

- Using our project website: [www.doggerbankd.com](http://www.doggerbankd.com)
- Submit feedback on our website using our online feedback form and interactive map. The mapping tool allows you to leave comments at specific locations.
- Sending written feedback to our freepost address: **FREEPOST DOGGER BANK D**  
Return this feedback form or write a letter - no need for a stamp
- Sending an email to: [contact@doggerbankd.com](mailto:contact@doggerbankd.com)

We understand that people living and working locally have a wealth of knowledge about the area. Our consultation is designed to gather your comments and suggestions on our proposals.

You can complete all or part of this form. All responses will be used to inform our project proposals.



For information on Dogger Bank D proposals, refer to the non-statutory consultation brochure on our website. The brochure is also available at listed deposit locations and at consultation events.

**Scan the QR code to download the brochure.**

Contact us by email at [contact@doggerbankd.com](mailto:contact@doggerbankd.com) or call us on **0800 254 5029** if you would like any of the consultation materials to be sent to you. We are happy to supply our materials in alternative and accessible formats such as large-print, alternative language or Braille.

Don't know   Strongly disagree   Disagree   Neutral   Agree   Strongly agree

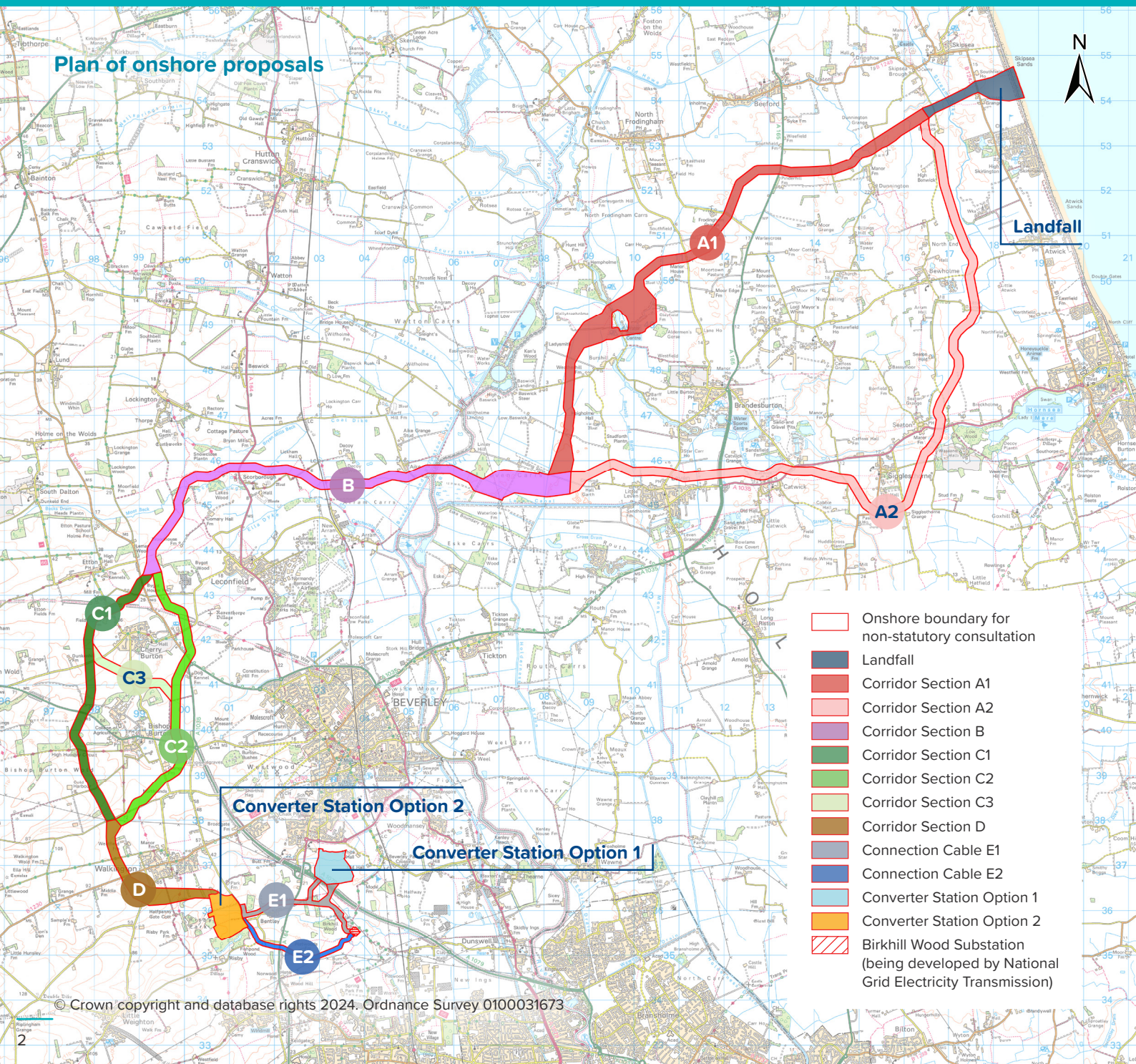
I am concerned about climate change (sometimes called global warming)

I support offshore wind as a source of energy

I believe that offshore wind has a vital role to play in the UK's energy future

I believe communities should benefit from energy projects close to them

**Plan of onshore proposals**



- Onshore boundary for non-statutory consultation
- Landfall
- Corridor Section A1
- Corridor Section A2
- Corridor Section B
- Corridor Section C1
- Corridor Section C2
- Corridor Section C3
- Corridor Section D
- Connection Cable E1
- Connection Cable E2
- Converter Station Option 1
- Converter Station Option 2
- Birkhill Wood Substation (being developed by National Grid Electricity Transmission)

## Offshore proposals

**Question 1:** Do you have any comments or suggestions on the offshore aspects of the project, such as fisheries, marine environment use, ecology, or construction? See pages 10 and 11 of the consultation brochure for the offshore proposals.

## Onshore proposals

To connect to Birkhill Wood Substation, we will bring offshore cables ashore on the Yorkshire coast and lay underground cables to a new converter station. The map on page 2 shows the landfall point, cable corridor sections, and converter station location options.

**Question 2:** Do you have any comments on the proposed landfall area? See page 15 of the consultation brochure for the landfall proposals.

**Question 3:** Do you have any comments on the proposed corridor sections? See pages 16 to 20 of the consultation brochure for the cable corridor proposals.

**Question 4:** Which of the proposed corridor sections, i.e. A1 or A2, do you prefer from the landfall, and why?

**Question 5:** Do you have any comments or information about the proposed options for the converter station location? See page 21 of the consultation brochure for the converter station location options.

**Question 6:** Do you have any comments on the proposed connection cables, E1 or E2, which would connect into Birkhill Wood Substation?

**Question 7:** Do you have any suggestions we can consider as part of the process of undertaking an Environmental Impact Assessment in order to avoid or reduce impacts where possible? This could include landscaping, protecting views, wildlife conservation, local events, or sensitive areas like recreational routes, nature spots, and tourist areas.



**Question 8:** Do you have any comments or suggestions on how we can coordinate with other major infrastructure projects in the region?



**Question 9:** Do you have any suggestions and comments on how Dogger Bank D could support and work with local communities?

**Question 10:** Do you have any other comments about our proposals?

**Our aim is to ensure our consultation events are welcoming and materials are accessible to everyone and we encourage you to provide feedback through your preferred method. Our consultation closes at midnight on Tuesday 22 October 2024.**

	Don't know	Strongly disagree	Disagree	Neutral	Agree	Strongly agree
I found the information shared about Dogger Bank D clear and easy to understand	<input type="checkbox"/>	<input type="checkbox"/>	<input type="checkbox"/>	<input type="checkbox"/>	<input type="checkbox"/>	<input type="checkbox"/>
I believe that the project team has engaged in an open and transparent way	<input type="checkbox"/>	<input type="checkbox"/>	<input type="checkbox"/>	<input type="checkbox"/>	<input type="checkbox"/>	<input type="checkbox"/>

How did you find out about the consultation? You can choose more than one.

- |   |   |
|---|---|
| <input type="checkbox"/> I received a letter                | <input type="checkbox"/> I saw a poster   |
| <input type="checkbox"/> I saw a digital advert             | <input type="checkbox"/> Someone told me about the consultation                           |
| <input type="checkbox"/> I saw an advert in the local press | <input type="checkbox"/> I saw the consultation materials at one of the deposit locations |
| <input type="checkbox"/> I received an e-newsletter         |   |

**You do not have to supply any personal details however doing so will help us to understand the views of those in specific areas (through postcode data) and help us to meet the needs of the community during the consultation process. Your personal details will be stored in compliance with our data protection policy.**

Your postcode (optional)

What is your age group?

- 18 to 24    25 to 34    35 to 44    45 to 54    55 to 64    65 or over

I am a:

- Resident    Business    Representative of an organisation (please state which one)

- Landowner  
 Representative of a statutory organisation (please state which one)

Any information given on this form can be used and published anonymously as part of our consultation reporting. We will always treat your data with respect, keep it secure, and never sell it to third parties or use it for purposes other than considering it to inform the development of Dogger Bank D.

Our privacy notice is available to view at [www.doggerbankd.com/privacy](http://www.doggerbankd.com/privacy)