

# DOGGER BANK D WIND FARM

## Statement of Community Consultation

Published in accordance with Section 47 of the  
Planning Act 2008

**Document Ref: 5.2.9    May 2025**



**[www.doggerbankd.com](http://www.doggerbankd.com)**

# Contents

<b>1.</b>	<b>Introduction</b>	<b>3</b>
<b>2.</b>	<b>Project Background</b>	<b>4</b>
<b>3.</b>	<b>About the Developers</b>	<b>5</b>
<b>4.</b>	<b>The Consenting Process</b>	<b>8</b>
<b>5.</b>	<b>Environmental Information</b>	<b>10</b>
<b>6.</b>	<b>Non-statutory Consultation so far</b>	<b>11</b>
<b>7.</b>	<b>The Proposals: Offshore</b>	<b>12</b>
<b>8.</b>	<b>The Proposals: Onshore</b>	<b>14</b>
<b>9.</b>	<b>The Statutory Consultation</b>	<b>16</b>

# 1. Introduction

**This Statement of Community Consultation (“SoCC”) sets out the proposed approach to consultation with the local community for the Dogger Bank D Offshore Wind Farm project (referred to as “the Project” or “Dogger Bank D”). This SoCC has been prepared in accordance with section 47 of the Planning Act 2008 (“the Act”).**

As Dogger Bank D will generate more than 100 megawatts (MW) of electricity, it is classed as a Nationally Significant Infrastructure Project (NSIP). Permission to construct, operate, maintain, and decommission the Project would be granted in accordance with the Planning Act 2008 with the award of a Development Consent Order (DCO).

This SoCC outlines the scope and nature of the community consultation being conducted and covers:

- background to the Project and the developers promoting it;
- an overview of the consenting process;
- a summary of the proposals;
- the environmental information required to be provided;
- non-statutory consultation so far;
- who will be consulted, where and when the consultation will occur;
- how the consultation will be conducted;
- where to access consultation materials and additional information; and
- the importance of feedback and how to provide comments on the consultation materials.

This SoCC has been developed in consultation with the relevant authorities in the area where the Project will be located, and as well as those who may be affected by or interact with the Project, including:

- East Riding of Yorkshire Council; and
- Hull City Council.

## 2. Project Background

**Dogger Bank D is a proposed fourth phase of the Dogger Bank Wind Farm, the world's largest offshore wind farm in construction. This exciting new phase aims to unlock the full potential of the eastern portion of the original Dogger Bank C area.**

Dogger Bank D is a 50 / 50 joint venture between SSE Renewables and Equinor. Both companies were involved in the design and planning consent of the Dogger Bank Wind Farm.

The Project has a capacity of up to 1.5GW of renewable electricity by harnessing the power of offshore wind. It will be directly connected to a new grid connection point at Birkhill Wood, a proposed new substation located between Beverley and Cottingham in the East Riding of Yorkshire. This 400kV substation will be developed by National Grid Electricity Transmission and was identified as part of National Grid Electricity System Operator's Holistic Network Design (HND).

The HND is National Grid's plan to support the delivery of power across the UK, including supporting the connection of large-scale offshore wind farms. The HND process and the substation location forms part of the broader framework in which electricity transmission infrastructure is developed. This network is considered as a whole and is not subject to consultation within the scope of the Project.

Our proposals include offshore infrastructure for electricity generation and onshore and offshore infrastructure for transmission of the generated electricity. Additionally, we will explore the opportunity to incorporate Energy Storage and Balancing Infrastructure (ESBI) to store excess energy flexibly which can then be used to help manage electricity supply and demand.

### 2.1 Dogger Bank Wind Farm

Dogger Bank Wind Farm is an offshore wind farm being developed in three phases – Dogger Bank A, B and C – located between 130km and 190km from the North East coast of England at their nearest points. Collectively they will become the world's largest offshore wind farm.

Each phase will have an installed generation capacity of 1.2GW and represents a multi-billion-pound investment. Combined, they will have an installed capacity of 3.6GW and will be capable of powering up to six million homes annually.\*

Onshore and offshore construction has been underway since 2020, and Dogger Bank A started to generate renewable energy for the first time in October 2023.

The Dogger Bank Wind Farm is a joint venture partnership between SSE Renewables (40%), Equinor (40%) and Vårgrønn (20%).

SSE Renewables is leading on the development and construction of Dogger Bank Wind Farm, and Equinor will operate the wind farm on completion and during its expected operational life of around 35 years.

Dogger Bank D will be the fourth phase of the Dogger Bank Wind Farm.

*\*Six million homes powered per annum based on Typical Domestic Consumption Values (Medium Electricity Profile Class 1, 2,900kWh per household; Ofgem, January 2021), typical 55% wind load factor and projected installed capacity of 3.6GW.*

## 3. About the Developers

**SSE Renewables and Equinor are two global leaders in offshore wind energy development and operation.**



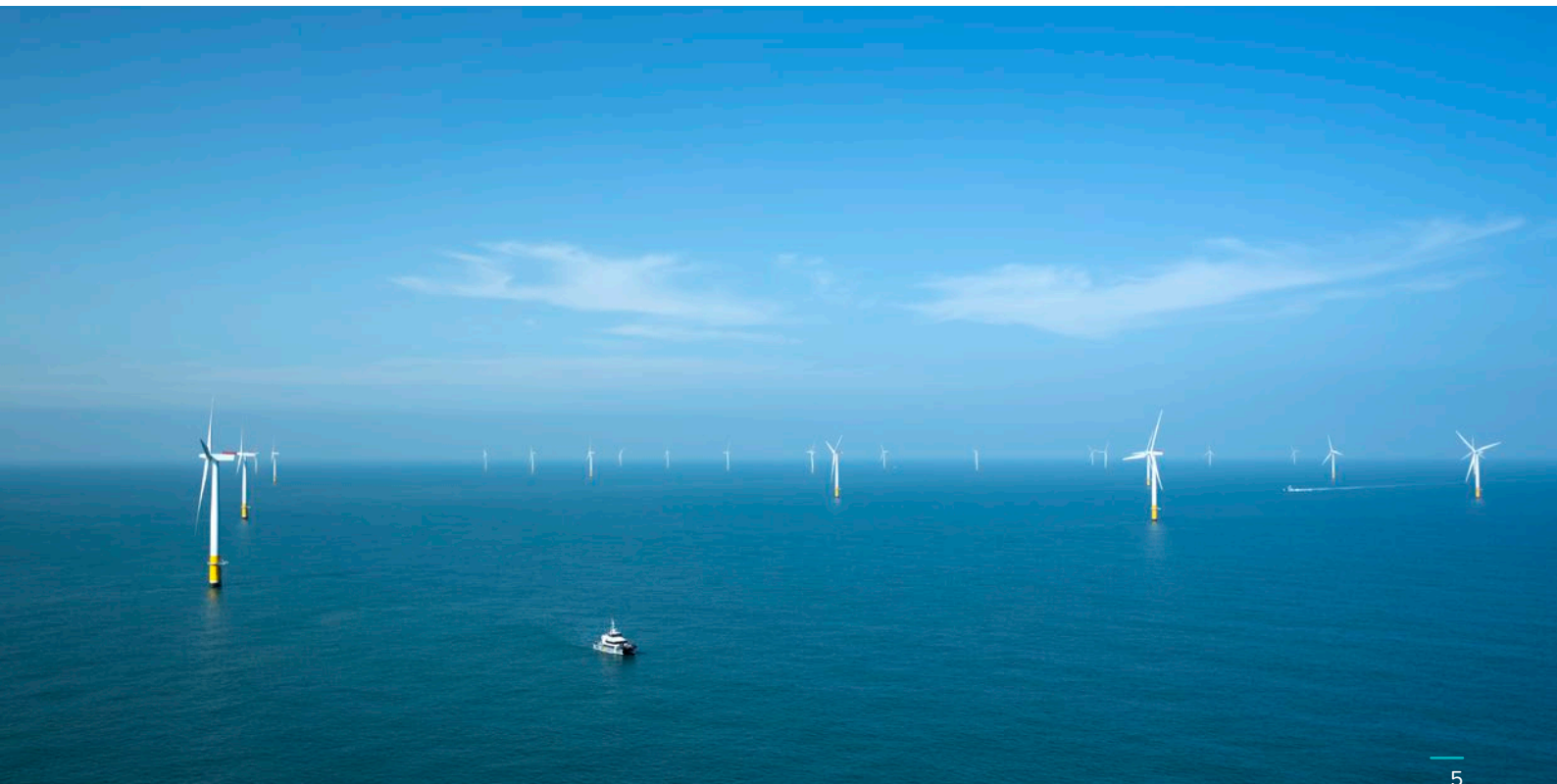
### About SSE Renewables

SSE Renewables is a leading developer and operator of renewable energy generation, focusing on onshore and offshore wind, hydro, solar and battery storage. Part of energy infrastructure company SSE plc, UK-listed in the FTSE100, it is delivering clean power assets to increase SSE's operational renewable generation capacity as part of a five-year clean energy plan to 2027, the ~£17.5bn Net Zero Acceleration Programme (NZAP) Plus. This includes delivery of the world's largest offshore wind farm in construction, the 3.6GW Dogger Bank Wind Farm. SSE Renewables has a team of around 2,000 renewable energy professionals with a passion for championing clean energy delivery, each based across the markets in which it operates. It operates across its core UK and Ireland markets, as well as in carefully selected international markets in Continental Europe and Japan.



### About Equinor

Equinor has a long track record of developing offshore wind farms in the UK, having already built and commissioned into operation the Sheringham Shoal Offshore Wind Farm, Dudgeon Offshore Wind Farm and Hywind Scotland Pilot Park, the world's first floating offshore wind farm. Equinor has been operating in the UK for more than 40 years and possesses over 50 years of offshore experience in the North Sea area. Equinor aims to power seven million homes from its UK windfarms by 2030.





*Map of Dogger Bank A, B, C & D*

## Dogger Bank D

Capacity: **Up to 1.5GW**

Status: **Pre-application**



## Dogger Bank B

Capacity: **1.2GW**

Status: **Under construction**



## Dogger Bank A

Capacity: **1.2GW**

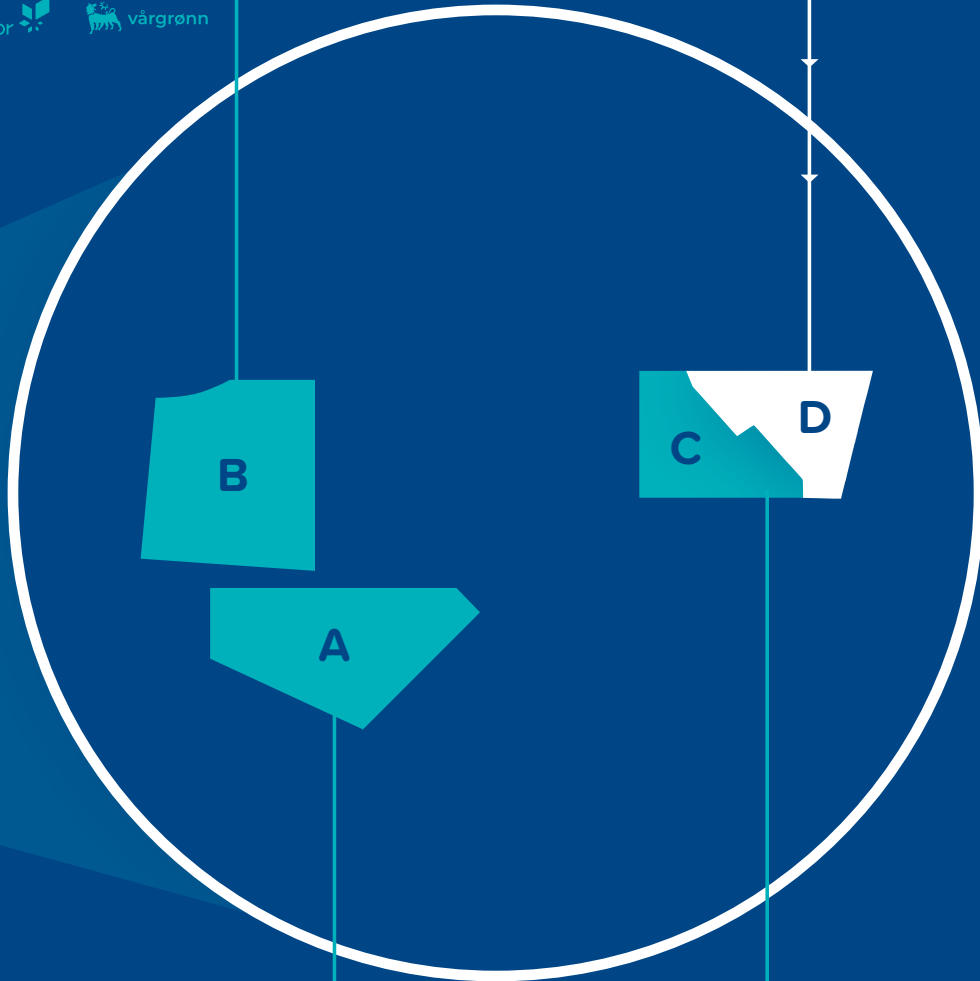
Status: **Under construction**



## Dogger Bank C

Capacity: **1.2GW**

Status: **Under construction**

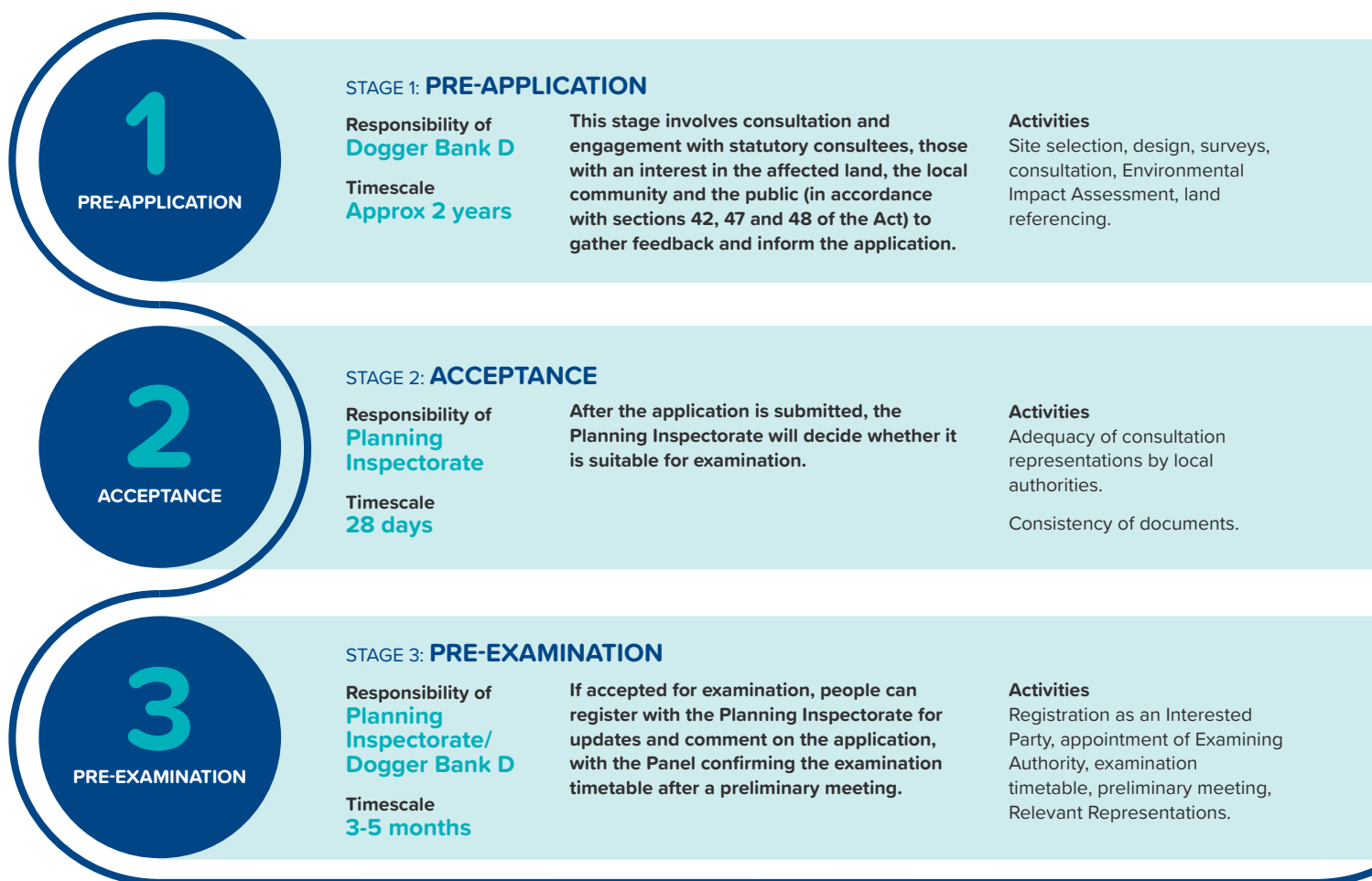


## 4. The Consenting Process

As a Nationally Significant Infrastructure Project (NSIP), Dogger Bank D requires approval under the Planning Act 2008. This requires us to submit a Development Consent Order (DCO) to the Planning Inspectorate, the agency responsible for examining and making recommendations to the Secretary of State on NSIP applications.

The Planning Inspectorate will oversee the DCO application process. If our application is accepted for examination, an independent panel will examine the proposals and make a recommendation to the Secretary of State for Energy Security and Net Zero. The Secretary of State will then consider the Panel's recommendation and decide whether to grant the DCO.

The DCO application process includes extensive local engagement and provides opportunities for public input, such as consultations and a public examination, to influence decision-making. The statutory consultation is a key time for local communities to help shape the project proposals.



Stakeholder engagement





The process consists of six stages. You can read more about the DCO process and how to get involved at [Nationally Significant Infrastructure Projects: The stages of the NSIP process and how you can have your say - GOV.UK](#)

The Project will remain in the pre-application stage until the DCO application is submitted in 2026.

4

EXAMINATION

#### STAGE 4: EXAMINATION

Responsibility of  
**Examining Authority**

Timescale  
**6 months**

The Panel reviews the application, gathers evidence, and considers feedback from interested parties.

**Activities**  
Questions, Representations, Hearings, Local Impact Reports, updates to key documents.

5

RECOMMENDATION

#### STAGE 5: RECOMMENDATION

Responsibility of  
**Examining Authority**

Timescale  
**3 months**

The Panel submits its findings and a recommendation to the Secretary of State.

**Activities**  
Recommendation made to Secretary of State.

6

DECISION

#### STAGE 6: DECISION

Responsibility of  
**Secretary of State for the Department for Energy Security and Net Zero**

Timescale  
**3 months**

The Secretary of State reviews the recommendation and decides whether or not to grant the DCO.

**Activities**  
Consideration of recommendation.  
Decision made.

Stakeholder engagement

## 5. Environmental Information

**Protecting and enhancing the habitats we operate in as we harness the wind for renewable energy generation is a key part of developing our proposals.**

### 5.1 Environmental Information Assessment

Pursuant to Regulation 12(1) of the Infrastructure Planning (Environmental Impact Assessment) Regulations 2017, we confirm that the Project is Environmental Impact Assessment (EIA) development and the information in this SoCC confirms how the Project intends to publicise and consult on preliminary environmental information. The EIA for the Project will be undertaken in accordance with Regulation 5 of the Infrastructure Planning (Environmental Impact Assessment) Regulations 2017.

The EIA process involves evaluating the potential environmental effects of the proposed development, conducting surveys, and identifying mitigation measures to reduce or eliminate these impacts.

### 5.2 Preliminary Environmental Information

We will provide Preliminary Environmental Information in the form of a report, and this will be consulted on as part of the statutory consultation. This is referred to as the Preliminary Environmental Information Report (PEIR). The PEIR will be based on the baseline data and assessment work completed so far.

The report will present the initial findings of the EIA process, helping consultees form an informed view of the Project's potential environmental impacts to date. It will include detailed information on the methodologies used for surveys, the results of these surveys and initial assessments, and feedback gathered from our technical consultation.

Additionally, the report will describe measures that could mitigate, reduce, or offset any identified environmental impacts based on early assessments and consultations.

Consulting on the PEIR allows consultees, landowners and occupiers, the local community and stakeholders to review how the gathered information has been used and to provide additional feedback. This step is a crucial part of the consultation process, ensuring accountability, transparency, and building confidence in the decision-making process.

### 5.3 Environmental Statement

The PEIR and consultation responses will be used to produce an Environmental Statement which will expand upon the content of the PEIR. It will include results from any surveys which were not provided within the PEIR and also outline any changes made to the Project following PEIR and consultation.



Gannet

## 6. Non-statutory Consultation so far

**We are committed to engaging with communities throughout the DCO application process, and have undertaken several consultations prior to statutory consultation.**

### 6.1 2023 non-statutory consultation

Between Spring 2023 and Spring 2024 we explored two options for how energy from Dogger Bank D could be used. One option involved connecting to a new onshore hydrogen production facility in the East Riding of Yorkshire, while the other involved connecting to the UK electricity network via a shared connection to an Offshore Collector.

We carried out a non-statutory consultation between 26 September and 7 November 2023 during which we shared information about:

- The offshore array area and offshore export cable corridor.
- Landfall options southeast of Aldbrough.
- Two potential locations for the hydrogen production facility: near to Aldbrough or at Saltend.
- Different routing options for the onshore export cable corridor to either location.

We received valuable feedback from the local community, landowners and stakeholders, which provided important insights into their concerns, preferences and suggestions. This feedback was instrumental in helping us better understand the potential impacts of the hydrogen production facility location options and the specific needs of those affected.

The potential for hydrogen production will not be taken forward as part of the Project.

### 6.2 2024 non-statutory consultation

In March 2024, the National Grid Electricity System Operator identified a new grid connection point for the Project at Birkhill Wood Substation.

We undertook a non-statutory consultation between 10 September and 22 October 2024 and presented information on:

- The offshore array area and offshore export cable corridor.
- A landfall southeast of Skipsea.
- Different routing options for the onshore export cable corridor from the landfall.
- Two zones within which we could co-locate the onshore converter station and the ESBI.

Through the feedback we received from the local community, landowners and stakeholders, we gained valuable insights into their concerns and preferences. This input was essential in helping us better assess the potential effects of the route options and understand the needs of those directly impacted.

At this stage, there are different constraints across the two zone options for locating the onshore converter station and ESBI. We are continuing to move both zones forward to statutory consultation while conducting further investigation to assess the environmental, engineering, and land constraints in detail. This will help inform the selection of a preferred zone.

Read the summary consultation reports at [www.doggerbankd.com](http://www.doggerbankd.com)



## 7. The Proposals: Offshore

### 7.1 Offshore Array Area

The offshore project area lies within the North Sea on an area known as the Dogger Bank. The offshore array area is 210 kilometres (km) from the Yorkshire coast at its closest point so the turbines will not be visible from the shore.

The turbines will be placed in an 'array area' which covers approximately 262 square km. The array area shares a boundary with the Dogger Bank C offshore wind farm to the west.

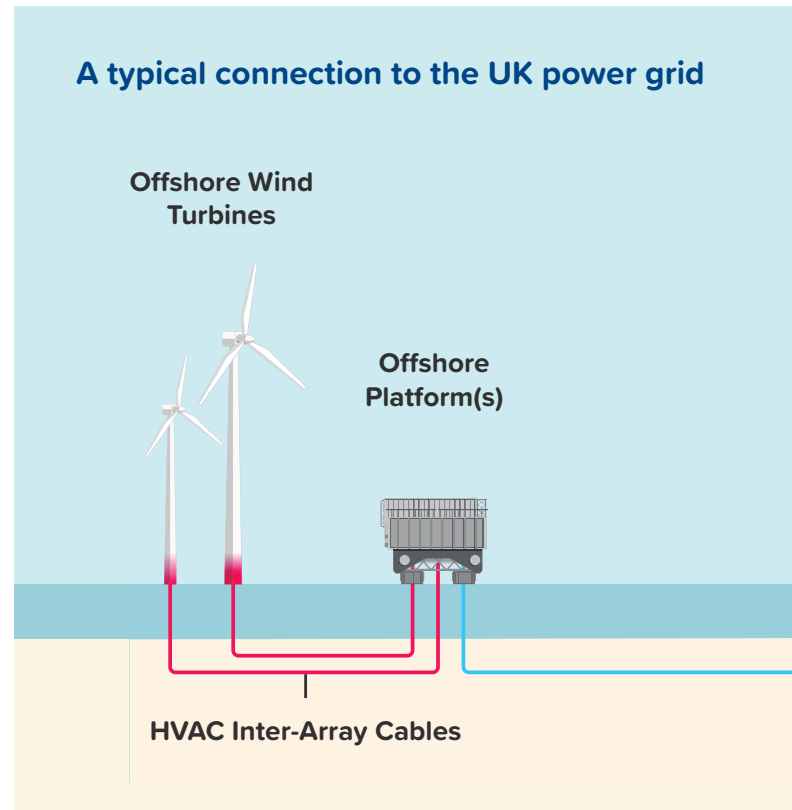
Within the array area there will also be inter-array cables and up to two offshore platforms.

The exact turbine layout, number, size and type of foundation, as well as the details for the offshore platform(s), will be finalised post-consent.

### 7.2 Offshore Export Cable Corridor

Electricity generated by Dogger Bank D will be transmitted to shore via two offshore export cables, located within an offshore export cable corridor. The cables will carry High Voltage Direct Current (HVDC) and be buried beneath the seabed wherever possible. Where burial is not feasible, they will be laid on top of the seabed and protected.

The corridor will run from the northwest corner of the array area to a landfall on the Yorkshire coast, southeast of Skipsea.



The diagram above shows a typical connection of an offshore wind farm to the UK power grid and how electricity is generated and reaches homes and businesses.



#### Up to 113 wind turbines

with associated support structures and foundations fixed to the seabed



#### 3.5m

Target burial depth for the cable (where burial is required)



#### Up to 2 offshore platforms

with associated support structures and foundations fixed to the seabed



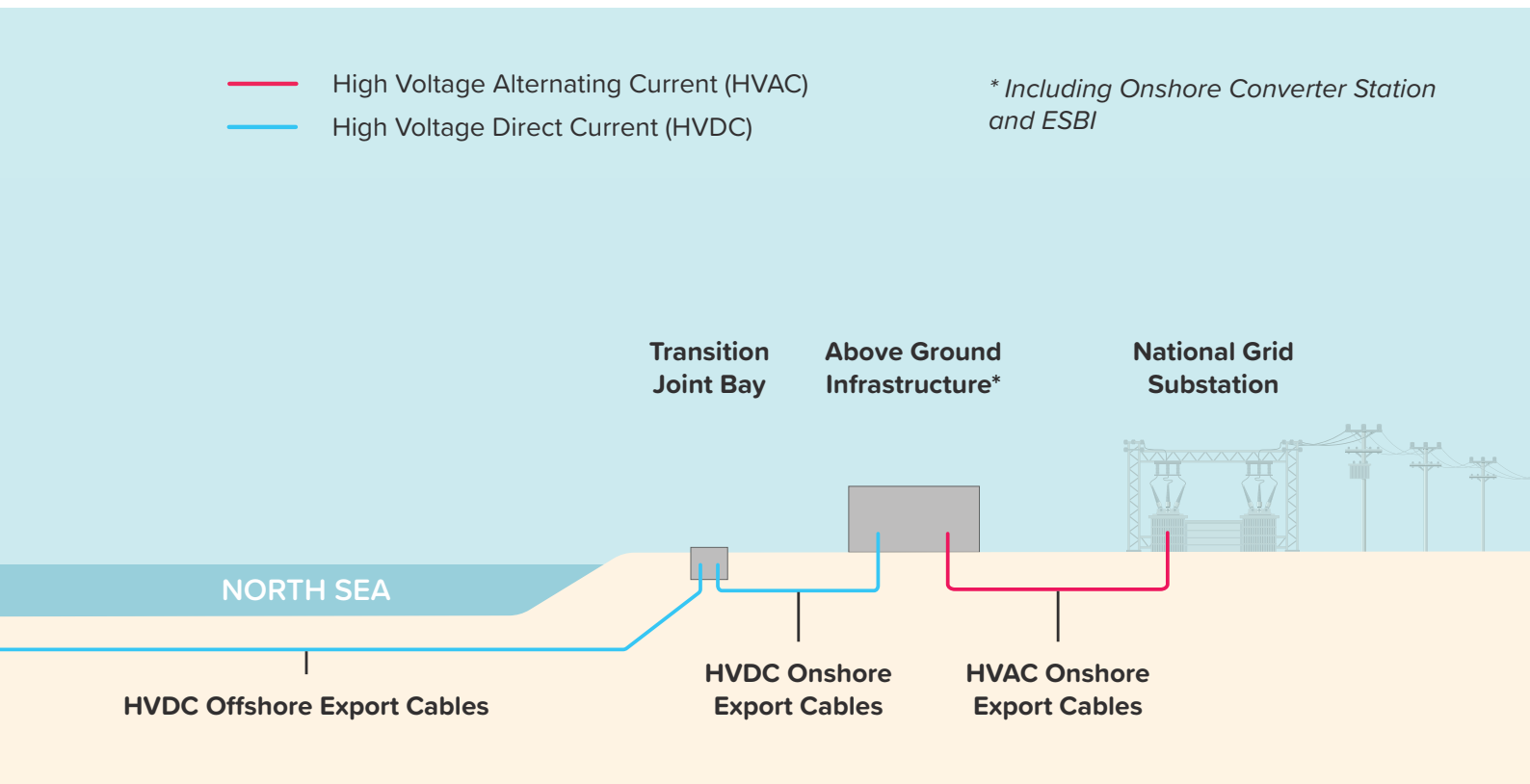
#### Up to 800km

Estimated length of offshore cables to transmit the electricity to shore



#### Up to 400km

Estimated length of cables between turbines (inter-array cables)



1

### Wind turbines generate electricity

- Each turbine has blades that rotate when the wind blows, turning a rotor connected to a generator.
- The generator converts the kinetic energy of the spinning blades into electrical energy.

2

### Electricity is collected

- The electricity generated by each turbine is transferred via cables to an offshore substation.
- The offshore substation collects electricity from multiple turbines and converts the voltage to HVDC.

3

### Transmission to shore

- High-voltage subsea cables carry the electricity from the offshore substation to shore to a landfall point.
- These cables are typically buried under the seabed to protect them from damage.

4

### Underground onshore export cables

- The cables are buried underground with the land reinstated after construction.
- They reach the converter station where the electricity is converted to HVAC so that it is suitable for integration into the national grid.

5

### Connection to the substation

- The electricity is then transmitted from the converter station to a National Grid substation.
- Once integrated into the national grid, the electricity can be distributed to homes, businesses, and industries.

6

### Grid integration and distribution

- Grid operators manage the distribution of electricity, ensuring a stable and reliable supply.
- The electricity generated by the offshore wind farm becomes part of the overall energy mix available to consumers.

## 8. The Proposals: Onshore

### 8.1 Landfall

The landfall is where the two offshore export cables will come ashore. We have identified a landfall area 1.2km southeast of Skipsea and 5.8km north of Hornsea set back from the coastline.

At the landfall, the offshore cables will be pulled beneath the seabed and the cliff, then connected to a set of onshore HVDC cables. This would take place underground in a safe and secure casing called a 'transition joint bay' located underground. Above ground there will be a link box so that the cable joints can be accessed for inspection and maintenance.

A temporary construction compound and access to a haul road to the compound will be installed.

### 8.2 Onshore cable corridor

The onshore cables will follow a route of approximately up to 55km from the landfall to the converter station zone, laid within an onshore cable corridor.

The Project has made a commitment to lay all onshore cables underground, to reduce their visual impact. There will be link boxes and associated marker posts placed at regular points along the route above and below ground. During construction we will have temporary working areas, likely to be located alongside the cable corridor, and a haul road which will run along the cable corridor, and additional spaces for construction compounds and site access points.

The majority of the cables will be installed using the open cut (trenched method). Where the cable route crosses roads, railways, watercourses, or ecologically sensitive areas, trenchless techniques will be used where feasible to minimise the impact on these features and disruption to users.

Once the cables are installed, the land used during construction will be returned to its original use.

This statutory consultation presents an onshore cable corridor that is approximately 200 metres (m) wide, with some areas being slightly wider or narrower.

### 8.3 Converter station and ESBI

We will need a converter station to transform electricity from HVDC to High Voltage Alternating Current (HVAC) so that it can be fed into Birkhill Wood Substation.

Since the non-statutory consultation in 2024 we have been gathering additional environmental and engineering data for the two zones we previously presented, and we will continue to do so as we carefully evaluate the feasibility of each.

This statutory consultation will present both zones (shown as Zone 4 and Zone 8 on the image on page 15) for consideration, giving people the chance to understand the potential impacts of each. We will have regard to the feedback received into account when selecting the preferred zone.

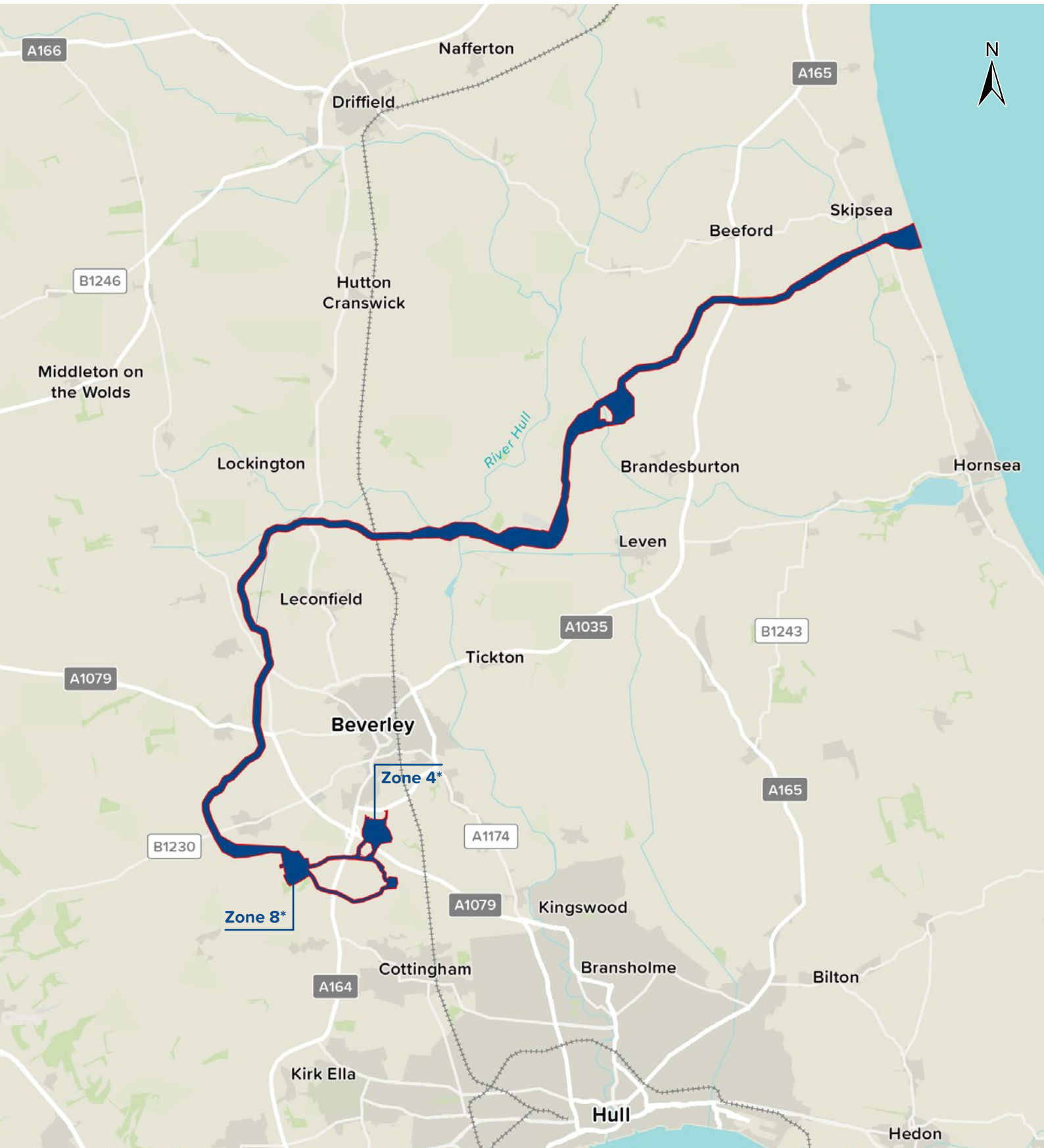
We will also present the infrastructure for the Energy Storage and Balancing System (ESBI) which will store excess energy generated by the wind farm for future use, helping to balance the electricity grid. The ESBI would be co-located on the same site as the converter station.

During construction, we will have temporary working areas and site accesses. Once operational the converter station and ESBI will be unmanned, but site access will still be required periodically for maintenance and other operational needs.

### 8.4 Connection to the national grid

The route of the HVAC cables from the converter station to Birkhill Wood Substation will depend on which zone is selected for development. The cables will be installed underground, but the link boxes for the cables will be placed above ground.





\*Zone 4 (Option 1) and Zone 8 (Option 2) as labeled in the 2024 consultation



Onshore development area

*Map is indicative and not to scale*

# 9. The Statutory Consultation

## 9.1 Overview

Statutory consultation for the Project is a legal requirement under the Act. It helps ensure that our proposals for the Project take into account environmental, social and legal considerations, and that stakeholders have a chance to raise concerns before the Project moves forward and before the DCO application is submitted.

---

## 9.2 Who we will consult with

As this is a statutory consultation, we are required to consult with specific prescribed representatives. Additionally, we will actively engage with a wide range of local people and groups.

The groups defined in the Act are as follows:

**Section 42:** Prescribed bodies and statutory consultees, e.g. Natural England, the Marine Management Organisation and the Environment Agency.

These are listed in Schedule 1 of the Infrastructure Planning (Applications: Prescribed Forms and Procedure) Regulations 2009 (as amended).

### **Section 43:** Local authorities

Local authorities, as defined under section 43, are those in whose area the proposals are sited, and adjoining local authorities, e.g. East Riding of Yorkshire Council and Hull City Council.

### **Section 44:** Landowners / those with an interest in the land

Those with an interest in or claim to the land related to the proposed application, such as owners, tenants, occupiers or others with a stake in the land.

Since some elements are located at sea, we welcome comments from individuals and groups with an interest in the seabed such as those with commercial fishery and shipping and navigation interests.

### **Section 47:** Local community

We will consult with individuals and communities living near the land affected by the DCO application. We also welcome responses from anyone who is interested or feels impacted by our proposals.

We will consult with the following groups:

- Local communities – people with homes and businesses in the vicinity of the land that may be impacted by the Project.
- Elected representatives – parish and town councillors in whose area our proposals are sited and those in adjoining councils, local authority elected members and MPs.
- Local special interest groups – such as local wildlife, heritage and archaeology, maritime and leisure groups, residents' associations and organisations such as local Ramblers and the Yorkshire Wildlife Trust.
- Seldom heard groups – individuals and groups who are often under represented or who are less likely to engage with traditional consultation methods.

We will work with East Riding of Yorkshire Council, among others, to identify key community groups to encourage these groups to get involved and participate in the consultation.

### **Section 48:** Duty to publicise

We will publicise the proposed development in the prescribed manner so people beyond the local community will be able to comment.



### 9.3 What we will consult on

We will seek feedback on various aspects of our proposals which include, but are not limited to, the following:

- The offshore infrastructure and the boundary within which the offshore export cable could be routed;
- The landfall area and how we will bring the offshore export cables ashore;
- The onshore cable corridor and proposed refinements;
- The proposed zones for locating the onshore converter station and the ESBI;
- Potential effects on the onshore and offshore environment (e.g. landscape and visual amenity, terrestrial and marine ecology);
- Potential economic effects e.g. commercial activities such as shipping, navigation and fisheries, employment opportunities;
- Potential social effects e.g. on public rights of way, noise and vibration during construction, traffic and transport;
- Construction methodologies and locations for siting temporary construction areas such as compounds and accesses;
- Potential mitigation measures and commitments;
- Our PEIR and its non-technical summary (NTS); and
- Documents associated with the Habitats Regulations Assessment in relation to potential impacts on nature conservation areas (with European conservation status).

Some aspects of the Project, like the array area where the turbines will be located, are fixed. However, other aspects may be adjusted or changed based on feedback received during this consultation.

### 9.4 When we will consult

Our statutory consultation will be carried out over an eight-week period in Summer 2025, starting on **10 June** and closing at **11.59pm** on **5 August 2025**.

Should the consultation dates change, an updated SoCC will be issued to East Riding of Yorkshire Council and Hull City Council for information. The consultation period will be no shorter than originally stated in the SoCC consulted on with East Riding of Yorkshire Council and Hull City Council, and the dates for events, webinars, and public notices will be revised and communicated accordingly.

A pre-awareness engagement period will take place before the consultation begins, involving the distribution of mailshots, statutory notices, adverts and social media activity.

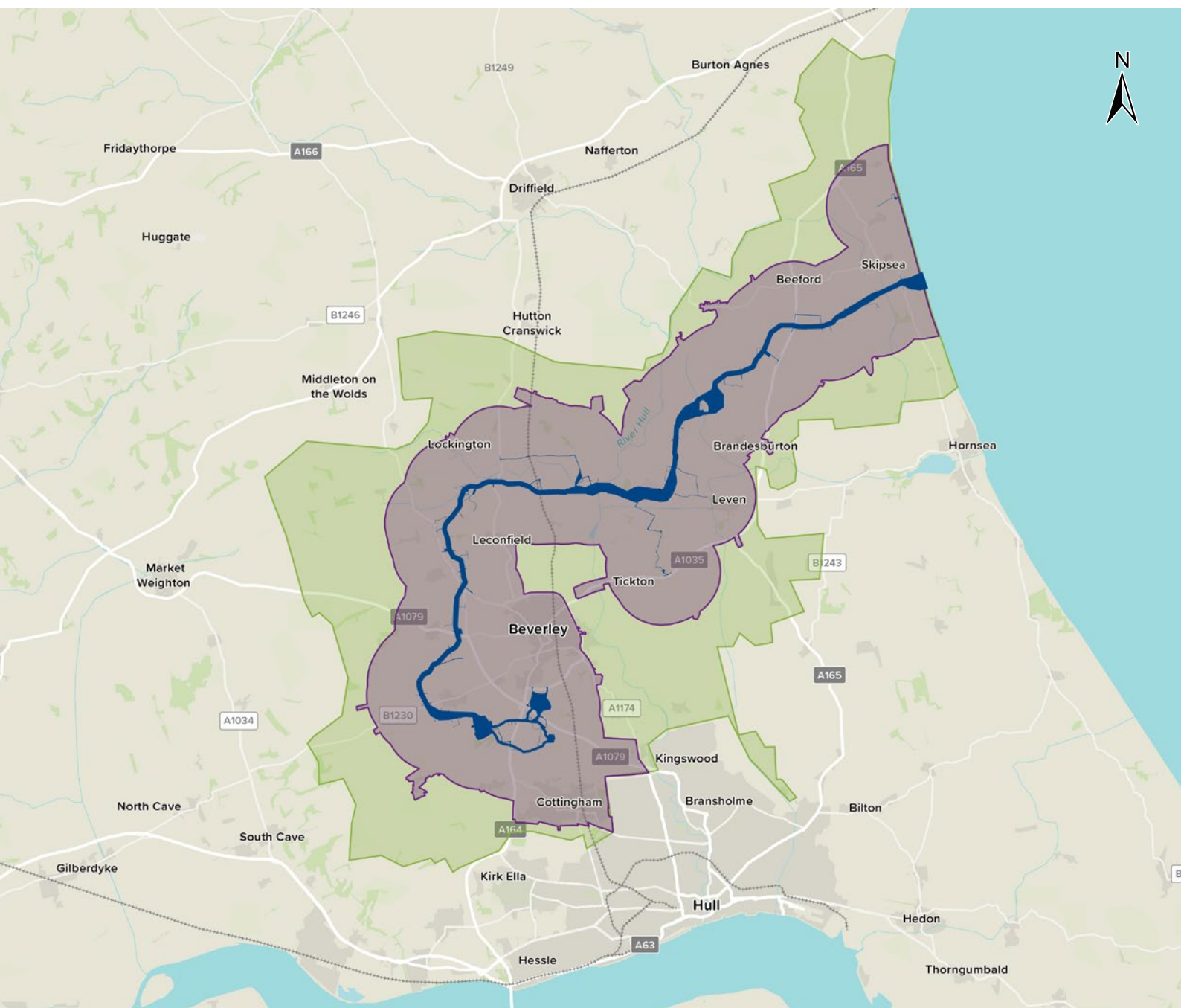
Consultation materials will be available across online and offline outlets on 10 June 2025 and events will be held across East Riding from 24 June 2025. See page 20 for details of events and webinars.


## 9.5 Where we will consult

For this consultation, we have defined two areas, as shown on the image below. The primary consultation area (shown in purple) is based on a minimum radius of 2km, measured from the boundaries of the onshore development area.

This has been extended further, where proportionate and reasonable, to include entire streets, rather than splitting up hamlets or neighbourhoods.

The secondary consultation area (shown in green) extends to the boundaries of parish and town councils which lie within the 2km buffer even if those councils do not directly interact with the onshore development area.



 Onshore development area (with access routes)

 Primary consultation area

 Secondary consultation area

## 9.6 How we will consult

We will use various methods to notify people about the consultation, explain our proposals and actively encourage people to share their feedback.

### Notification activities

Before the consultation, we'll send a **letter** and **leaflet** via Royal Mail to homes and businesses in the primary consultation area. It will give details about the proposals and consultation, provide event details and guide people to the website and ways to contact us for more information.

The leaflet will also be provided to elected representatives and representatives of groups that are hard to reach, to introduce the Project and explain how people can participate.

We will work with local authorities to identify additional local publications and venues where information about the consultation and how to get involved can be shared.

We will place **press adverts** in the Hull Daily Mail, Hull Magazine, Hornsea Community News, Holderness Gazette, Driffild and Wolds Weekly, Cottingham Times and Beverley Magazine before the consultation starts to inform local communities of the consultation and the deadline for providing feedback. The adverts will provide details about the consultation activities, including details of in-person events, as well as information on webinar dates, times and registration. The adverts will be supported by press releases to local media and trade publications.

We will also take out **statutory notices** in local and national newspapers, as required by the Act.

We will send out digital and printed **posters** promoting the consultation to parish and town councils which are located within the primary and secondary consultation areas and to community venues such as libraries, local information points, civic buildings and local shops around the consultation venues. Recipients will be asked to display these on noticeboards.

A **social media campaign** will help inform local communities of our consultation and how to get involved. This will include Facebook advertisements based on a user's geographical location e.g. within certain postcodes in East Riding of Yorkshire via Hull Live on Facebook. We will also ask parish and town councils to promote the consultation via their social media accounts.

### Consultation materials

We will provide a **consultation brochure** that explains the proposals using clear and simple language. The brochure will include details about the consultation, such as what we're consulting on, event details, how people can participate and the deadline for submitting feedback.

**Plans** of the onshore development area will be provided in various formats to display the information clearly, ensuring accessibility for different audiences, including digital, printed, and interactive versions.

We will provide a **non-technical summary (NTS) of the PEIR** which will give readers a clear and easy-to-understand overview of the potential environmental impacts of the Project. It will highlight key findings so far, such as potential effects on the environment, air quality, traffic, and noise, and present the steps proposed to avoid, manage or reduce significant impacts. The summary is designed for readers without technical knowledge, helping them understand the main issues and how they may be addressed.

**Feedback forms** are one of the ways we will collect responses and opinions from the public and stakeholders about our proposals, allowing them to share their concerns, suggestions, or support regarding various aspects of the Project. Printed feedback forms will be available at consultation events, at deposit locations, upon request by phone or email, and a digital version can be completed on our Project website.

We will provide a **FREEPOST address** and pre-printed envelopes to make it easier for people to return their forms at no cost, encouraging more participation regardless of their access to postage or transportation.

Those who have registered an interest in the Project via our website will be sent a newsletter electronically at the start of the consultation.

### Online resources

The Project website at [www.doggerbankd.com](http://www.doggerbankd.com) will be the main source of information for all. Two weeks before the consultation begins, the website will provide information about the consultation dates and event details. It will also inform the public that the consultation materials will be made available on the website when the consultation officially launches.

The website will feature an interactive feedback map of the proposals and a feedback form. The consultation documents, along with the technical materials related to the PEIR, will also be available on the website.

## Events

**Consultation events** will be held at accessible community locations across the primary consultation area, on different days, and at different times of day, to encourage attendance. These events will be advertised through our mailshot leaflet, posters, project website, local media and across deposit locations. We will assess each venue to ensure it is accessible by various transport modes and complies with the Equality Act 2010. We will use venues with on-site parking or those located within easy reach of public car parks and public transport, ensuring they are easy to find and access, with clear signage provided.

At each event, we will present information in various ways, including boards displaying key information on the proposals, maps showing the project boundaries, visualisations and digital displays of the Project.

We will hold two **webinars** which will include an overview presentation about the Project followed by a Q&A session.

The events offer everyone the opportunity to meet the Project team, learn about the proposals, ask questions, and provide feedback. Consultation materials will be available at each event.

<b>TUESDAY</b> <b>24</b> JUNE	 <b>Skipsea Village Hall</b> Bridlington Road, Skipsea, YO25 8TJ  3pm to 6.30pm	<b>THURSDAY</b> <b>26</b> JUNE	 <b>Walkington Village Hall</b> 17 East End, Walkington, HU17 8RX  3pm to 6pm
<b>WEDNESDAY</b> <b>25</b> JUNE	 <b>Leven Sports Hall</b> North Street, Leven, HU17 5NF  2pm to 7pm	<b>FRIDAY</b> <b>27</b> JUNE	 <b>Toll Gavel Church Hall</b> 27 Toll Gavel, Beverley, HU17 9AA  10am to 2pm
<b>THURSDAY</b> <b>26</b> JUNE	 <b>Cottingham Civic Hall</b> Market Green, Cottingham, HU16 5QG  10am to 2pm	<b>SATURDAY</b> <b>28</b> JUNE	 <b>Beverley Memorial Hall</b> 73-75 Lairgate, Beverley, HU17 8HN  10am to 2pm

## Webinars

For those who prefer to engage online or cannot attend an in-person event, we are offering two different dates to participate in a webinar. People can register on the website, by email or by calling the freephone number, and they'll receive an email with joining details.

<b>THURSDAY</b> <b>3</b> JULY	 <b>Online</b>  6pm to 7pm	<b>TUESDAY</b> <b>8</b> JULY	 <b>Online</b>  12pm to 1pm
-------------------------------------	---	------------------------------------	--



## Deposit locations

Printed copies of this SoCC, the consultation brochure, plans, feedback forms, Freepost envelopes and the NTS of the PEIR will be available for both viewing and taking away at the listed public centres/libraries (**deposit locations**) below.

People can also access the full PEIR digitally on public computers at these venues.

### Location

#### Beverley Customer Service Centre

Champney Treasure House, Champney Road, Beverley, HU17 8HE

#### Bridlington North Library

Marton Gate, Bridlington, YO16 6YD

#### Cottingham Library and Customer Service Centre

Market Green, Cottingham, HU16 5QG

#### Driffield Centre

Cross Hill, Driffield, YO25 6RQ

#### Hornsea Customer Service and Library

Broadway, Hornsea, HU18 1PZ

#### Leven Library

74 East Street, Leven, HU17 5NG

#### Market Weighton Wicstun Centre

14 Beverley Road, Market Weighton, YO43 3JP

## Meetings

After the 2024 non-statutory consultation, we established **liaison groups** with representatives from local parish and town councils within the primary consultation area. We will continue to provide project updates, gather feedback, and address issues that may directly affect residents, such as traffic and construction impacts. These groups will help ensure the Project evolves with local input.

**Meetings** with elected representatives, such as MPs, ward councillors, and portfolio holders will continue to keep them informed about the Project's progress and discuss important topics of interest.

We will manage enquiries in two ways during the consultation.

We will offer a **freephone** service manned by a contact centre 24/7 which will promote convenience, accessibility and inclusivity, enhancing communication, increasing public participation, and ensuring that everyone has equal access to request important information.

Our Project inbox with a dedicated **email address** will facilitate easier, more efficient communication.

## Ways to contact us



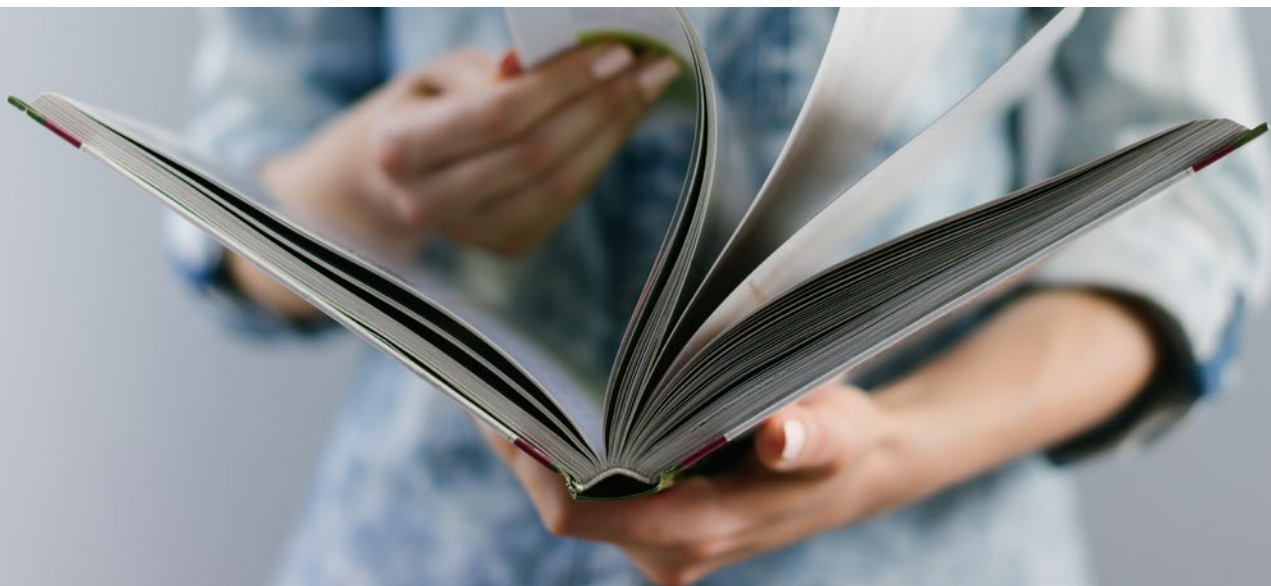
Call our freephone number:  
**0800 254 5029**



Email us at:  
**contact@doggerbankd.com**



Write to us, at no cost, at:  
**FREEPOST DOGGER BANK D**



## 9.7 Inclusive consultation

We recognise that some people or groups may face challenges participating in the consultation process for various reasons. We will identify groups that represent individuals who are less likely to respond to traditional consultation methods, have a limited capacity to engage with the consultation (e.g. due to time constraints, access to digital materials, preference for printed copies, cost of responding) and may require extra support to access materials.

We will provide a range of consultation materials to support communities in understanding our proposals. The PEIR contains detailed and technical information. To make this information accessible, we will offer a combination of print and online materials and plans, tailored to different levels of technical complexity, to cater to varying needs, understanding, and interests, allowing all stakeholders to consider our proposals.

We will use simple language in consultation materials and when responding to enquiries, wherever possible. This includes simplifying the language in technical documents with the production of a NTS of the PEIR and a Guide to the PEIR to help readers navigate the report and find the information they need more easily.

Documents will be made available on request in large print, alternative formats and different languages. Printed copies of the consultation brochure, plans, feedback form plus FREEPOST envelopes and the NTS of the PEIR can be requested to be sent in the post. One copy of each is free of charge. They will also be available across both online and offline outlets.

Given that the PEIR is made up of a large number of technical documents, if readers request a copy, we will provide access to it electronically to reduce paper use.

We will schedule events across several days and at different times to accommodate people with caring responsibilities, those with varying work schedules, the elderly and students, ensuring they have more opportunities to attend. We will avoid scheduling consultation events on public holidays.

We will offer two webinar dates at different times to give people more flexibility and choice.

People will be able to find out more by calling the freephone, using the project email or the freepost addresses.

## 9.8 How to provide feedback

The statutory consultation is a key opportunity for individuals, groups and communities to share their views on our proposals before an application for development consent is submitted.

There are several ways to submit feedback. Once the consultation begins everyone who submits comments and provides their contact details will receive an acknowledgement that their feedback has been received.

We will respond to questions about the consultation process, event details, availability of materials and how to submit a response. The main themes and issues raised will be summarised in a Consultation Report, which will be included in our DCO application.

Comments will be reviewed by Dogger Bank D and our appointed agents. Copies of the comments may be shared with the Planning Inspectorate, the Secretary of State and other relevant authorities to help inform the development of the Project. Personal details will not be made publicly available, unless required by law (such as for land referencing), and will be stored securely in compliance with the General Data Protection Regulations, the Planning Inspectorate's Customer Privacy Notice, and our privacy policy. Personal information will only be used for the consenting and regulatory processes.

### Ways to submit feedback



Email us at:  
**[contact@doggerbankd.com](mailto:contact@doggerbankd.com)**



Write to us, at no cost, at:  
**FREEPOST DOGGER BANK D**



Use the interactive map at  
**[www.doggerbankd.com](http://www.doggerbankd.com)** to drop a pin and leave comments on a particular location.



Complete a feedback form (paper or online version). Return the paper feedback form in the Freepost envelope.



## 9.9 How we will respond to feedback

We will collate and analyse the responses from this statutory consultation. We will have regard to the responses, along with additional technical assessments, as we update our proposals.

We may undertake targeted additional consultations beyond what is outlined in this SoCC e.g. as a result of feedback during the statutory consultation, in respect of localised project elements, a material change to the Project design or if new statutory consultees are impacted. This will help guide the final design of the Project. If we do proceed with further consultation, we will notify the relevant stakeholders who may be affected by the changes to give them the opportunity to comment on the amendments.

## 9.10 What happens next

Our Consultation Report will set out how we have undertaken the consultations, summarise the consultation responses and how we have had regard to the feedback. The report will detail the consultation process, showing how we followed the SoCC and met all legal requirements. We will then submit the report as part of the DCO application to the Planning Inspectorate.

We will continue to engage with stakeholders such as distributing regular newsletters to those who have registered for updates via the form on the Project website.

Once the DCO application is submitted to the Planning Inspectorate, individuals will also have the opportunity to formally comment on our proposals. For more information on the process, please visit the PINS website at:

**[Nationally Significant Infrastructure Projects: The stages of the NSIP process and how you can have your say - GOV.UK](#)**

# DOGGER BANK D WIND FARM

BY

